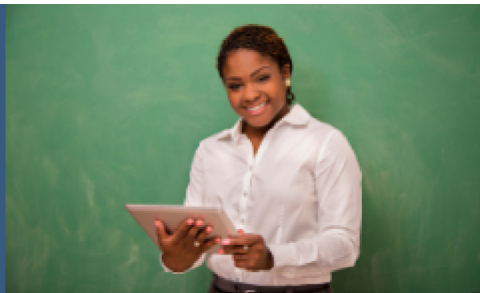


# ARE YOU A HERO?

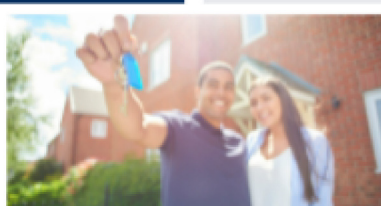
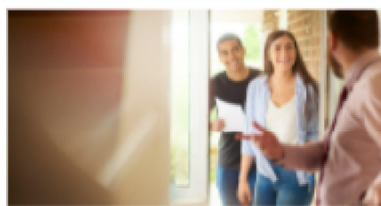
- EDUCATORS
- FIRST RESPONDERS
- HEALTHCARE WORKERS
- LAW ENFORCEMENT
- VETERANS & ACTIVE-DUTY MILITARY



## ABOUT THE PROGRAM

THANK YOU FOR YOUR SERVICE! NOW WE WANT TO SERVE YOU.

OUR GOAL IS TO HELP YOU FULFILL YOUR DREAM OF HOMEOWNERSHIP BECAUSE YOU DESERVE IT! WE SEE YOU WORKING HARD FOR OUR COMMUNITY EVERY DAY, AND THIS IS OUR WAY TO SAY THANK YOU FOR YOUR CONTRIBUTION.



FREE  
APPRAISAL \*



REALTOR  
REBATE \*\*



MORE  
SAVINGS

**WADE BETZ**

**AXEN**  
Mortgage

NMLS# 280613

[Team@WinningWithWade.com](mailto:Team@WinningWithWade.com)

(469) 906-2522

[winningwithwade.com](http://winningwithwade.com)

Corporate Address: 3100 W Ray Rd STE

201 Office # 209, Chandler AZ 85226.

Corporate NMLS #: 1660690



**DISCLAIMER :**

\*APPRAISAL CREDIT NOT TO EXCEED \$675.

\*\* REALTOR REBATE APPLICABLE TO PARTICIPATING REALTORS.

\*\*\* FOR PRIMARY RESIDENCE PURCHASE TRANSACTIONS ONLY